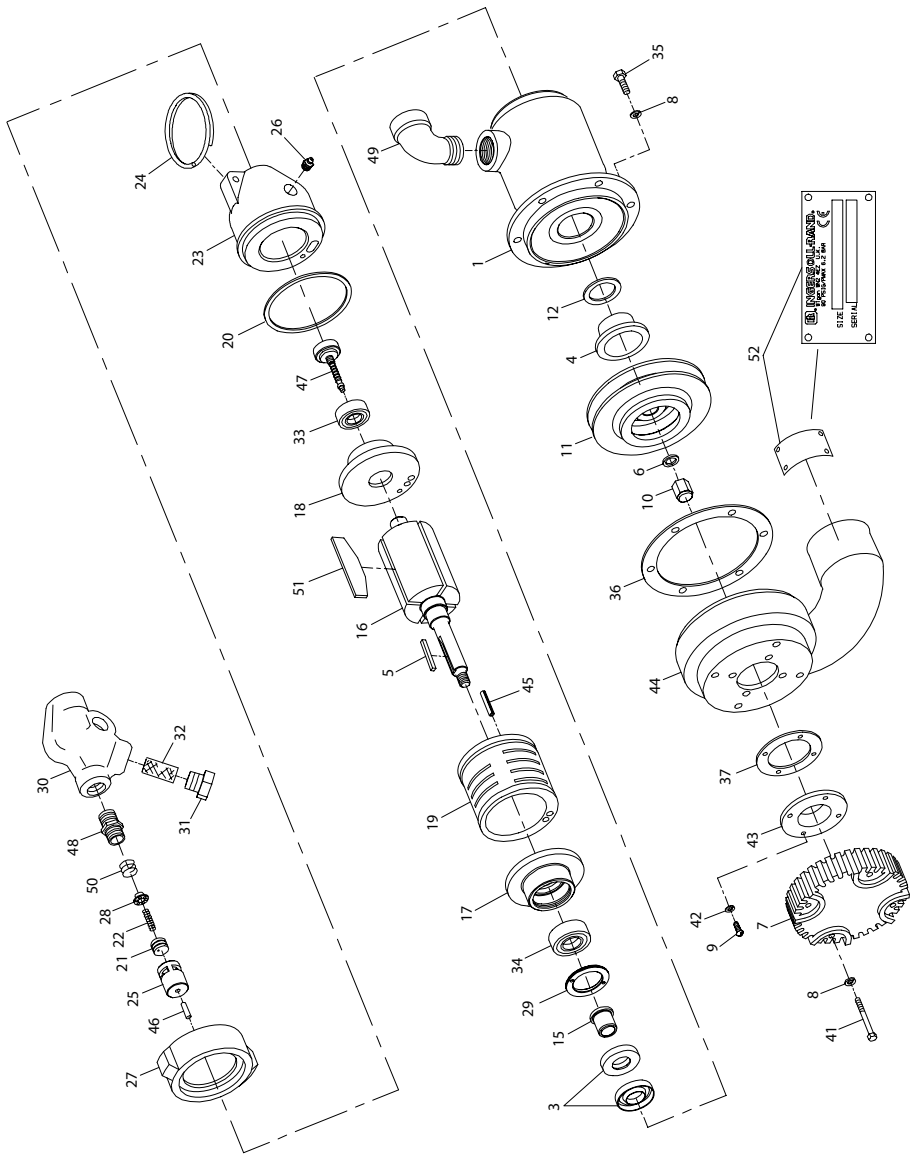


P35A1-EU Sump Pump- Exploded View



(Dwg. TPA1484)

P35A1-EU Sump Pump- Parts List

| Item | Part Description | Part Number | Item | Part Description | Part Number |
|------|---------------------------|-------------|------|---------------------------------|-------------|
| 1 | Motor Housing Assembly | S35-40 | 27 | Housing Nut | P35-282 |
| • 3 | Water Seal (2) | P35-153 | 28 | Governor Valve Spring Seat | P25-418 |
| 4 | Impeller Hub Bushing | S35-41 | 29 | Bearing Retainer | S35-400 |
| 5 | Impeller Key | P35-150 | 30 | Air Strainer Assembly | S35-A267 |
| 6 | Impeller Washer | P35-157 | 31 | Air Strainer Cap | S35-268 |
| 7 | Inlet | P25-148B | • 32 | Air Strainer Screen | 205-1061 |
| 8 | Spring Washer (10) | D02-321 | • 33 | Rear Rotor Bearing | R5H-22 |
| 9 | Suction Seal Capscrew (4) | P35-146 | • 34 | Front Rotor Bearing | S35-21 |
| 10 | Impeller Nut | P25-142 | 35 | Brass Bolt (6) | P35-114 |
| • 11 | Impeller | S35-143 | 36 | Impeller Case Gasket | P35-113 |
| • 12 | Impeller Shim | | • 37 | Suction Seal Shim (as required) | |
| | 0.005" (0.125 mm) | P35-151-5 | | 0.003" (0.075 mm) | P35-145-3 |
| | 0.010" (0.250 mm) | P35-151-10 | | 0.005" (0.125 mm) | P35-145-5 |
| | 0.025" (0.625 mm) | P35-151-25 | | 0.015" (0.375 mm) | P35-145-15 |
| 15 | Impeller Spacer | S35-152 | | 0.031" (0.780 mm) | P35-145-31 |
| 16 | Rotor | S35-53 | 41 | Brass Bolt (4) | P35-117 |
| • 17 | Front End Plate | S35-11 | 42 | Spring Washer (4) | L01-67 |
| • 18 | Rear End Plate | S35-12 | 43 | Suction Seal | P35-144 |
| • 19 | Cylinder | S35-3 | 44 | Impeller Case (2" NPT) | S35-112 |
| 20 | Housing Gasket | P35-43 | 45 | Cylinder Dowel | S35-98 |
| 21 | Governor Valve | S35-425 | 46 | Governor Valve Stem | S35-410 |
| 22 | Governor Valve Spring | P35-431 | 47 | Governor Assembly | S35-424 |
| 23 | Backhead Assembly | S35-102 | 48 | Air Strainer Nipple | P35-286 |
| 24 | Handle | S35-227 | 49 | Exhaust Elbow | P35-587 |
| 25 | Governor Valve Bushing | S35-429 | 50 | Seat Retaining Spring | H80-81B |
| 26 | Grease Fitting | P25-188 | 51 | Vane Packet (set of 4 Vanes) | R5H-42-4 |
| | | | 52 | Nameplate | P25-EU-99 |

• To keep downtime to a minimum, it is desirable to have on hand certain repair parts. We recommend that you stock one (pair or set) of each part indicated by a bullet (•) for every four tools in service.

Parts and Maintenance

When the life of the tool has expired, it is recommended that the tool be disassembled, degreased and parts be separated by material so that they can be recycled.

Tool repair and maintenance should only be carried out by an authorized Service Center.

Refer all communications to the nearest **Ingersoll Rand** Office or Distributor.

Related Documentation

For additional information refer to:

Air Sump Pumps Product Safety Information Manual 16576597,

Air Sump Pump Product Information Manual 04585162,

Air Sump Pump Maintenance Information Manual 16575466.

Manuals can be downloaded from www.ingersollrandproducts.com.